

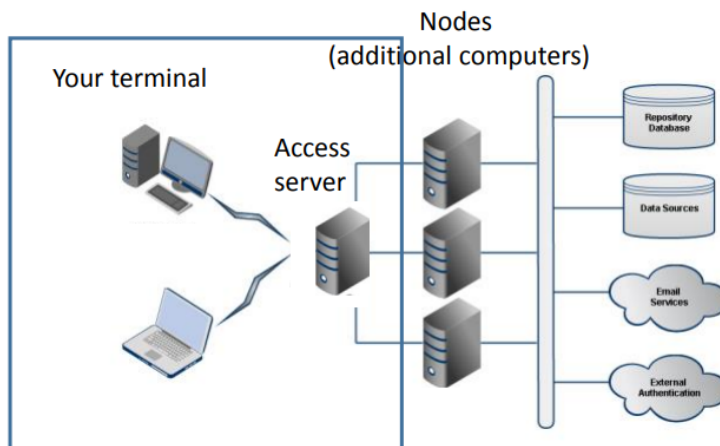
## An Introduction to deep-sequencing analysis for biologists

### Assignments Submission

- During the course, there will be 11 assignments. It is obligatory to submit at least 9 of them.
- Assignments must be submitted on time, due within one week.
- The assignments will be submitted when placed on WEXAC in the personal folder of each student (you will receive your ID in class).

To be able to place your assignment on WEXAC you will need to **mount** (see definition below) the WEXAC personal folder on your computer.

### Wexac architecture



- A terminal is a device used to communicate with other computers (entering data into, displaying and sending commands)

### Definition of Mount (From Wikipedia):

Mounting is a process by which the operating system makes files and directories on a storage device (such as hard drive, CD-ROM, or network share) available for users to access via the computer's file system.

## PC Instructions

1. Right-click the “My Computer” icon (sometimes appears as “This PC”), and then select the “Map Network Drive” option.

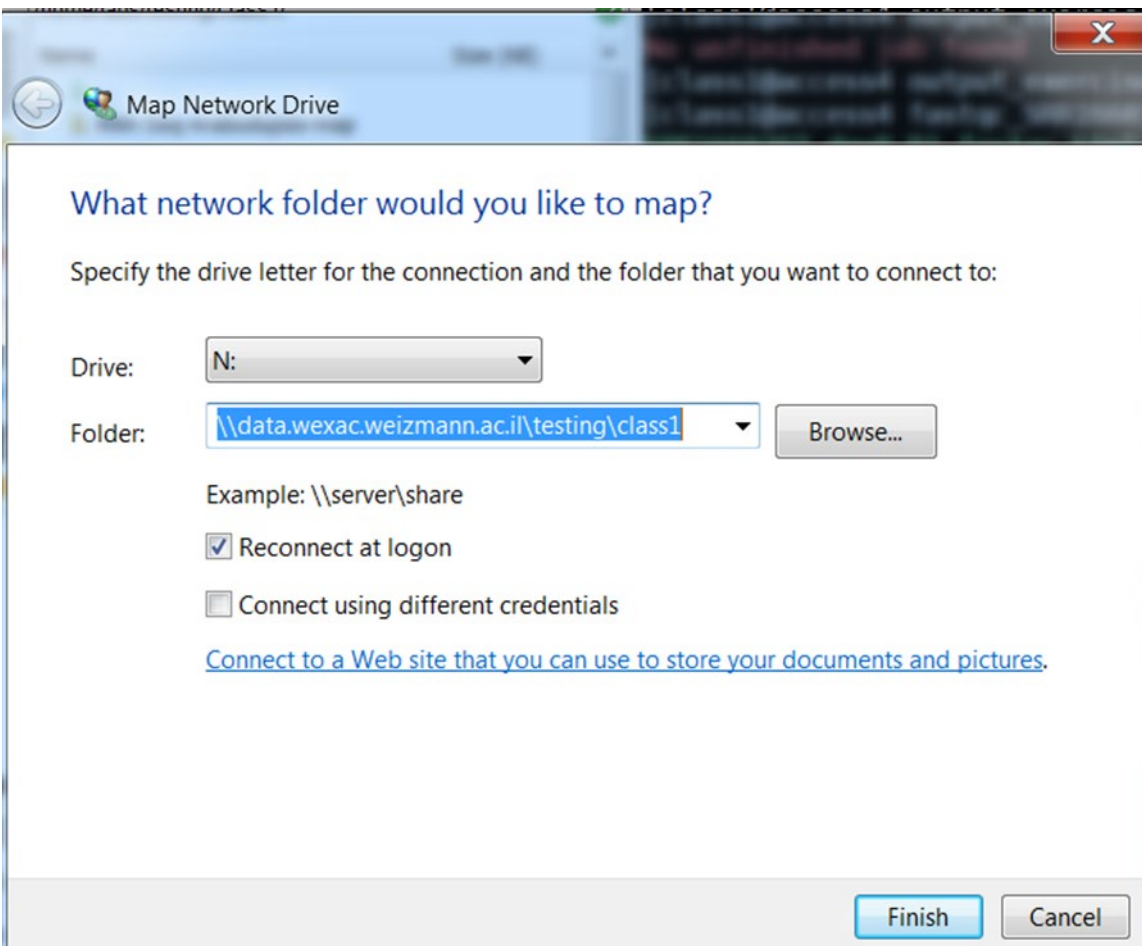


2. Choose the Drive (specify a letter or use the selected default)  
Enter the following path to your personal folder on WEXAC:

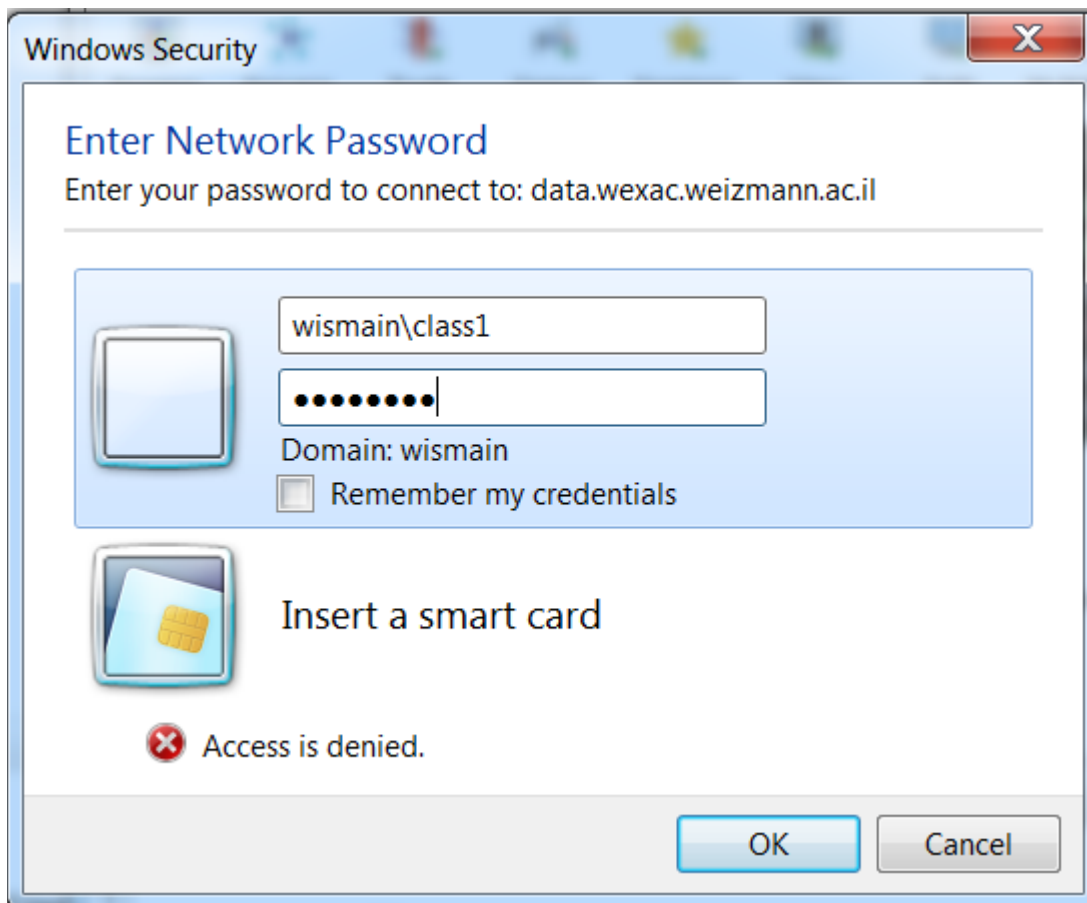
(replace NN with your class username digit[s])

\\data.wexac.weizmann.ac.il\testing\classNN

Example below for class1.

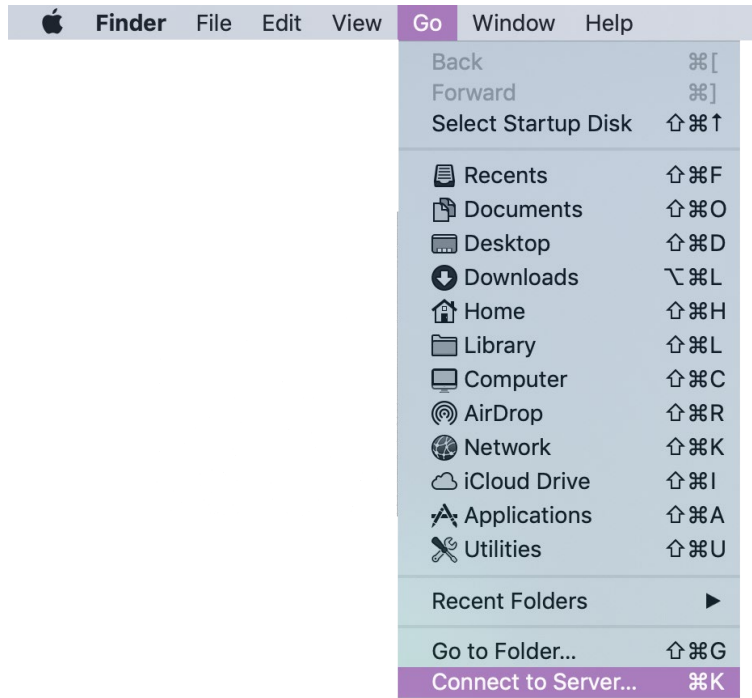


3. The following window will open, enter your password and press OK:



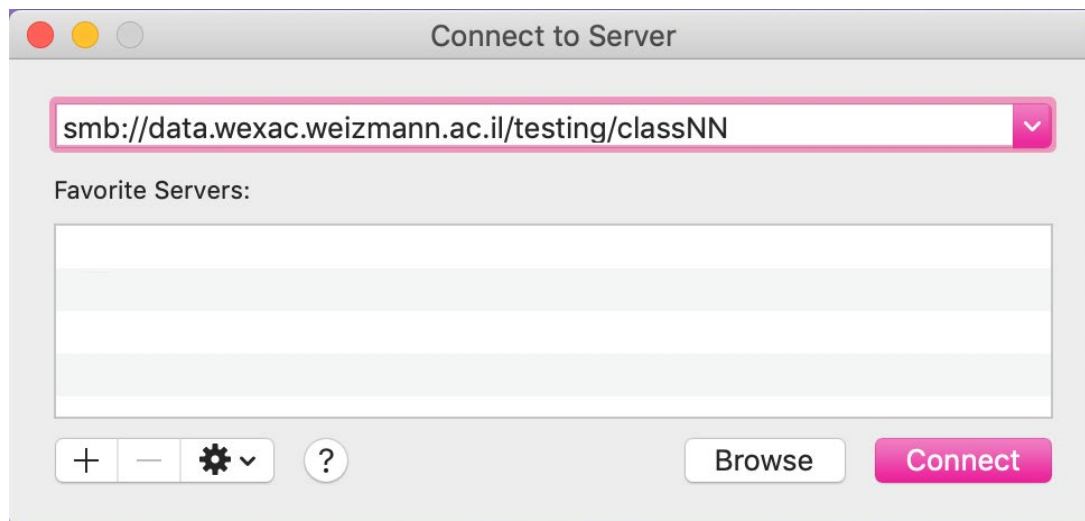
## MAC Instructions

1. Please click “Go” and then ”Connect to server” and enter



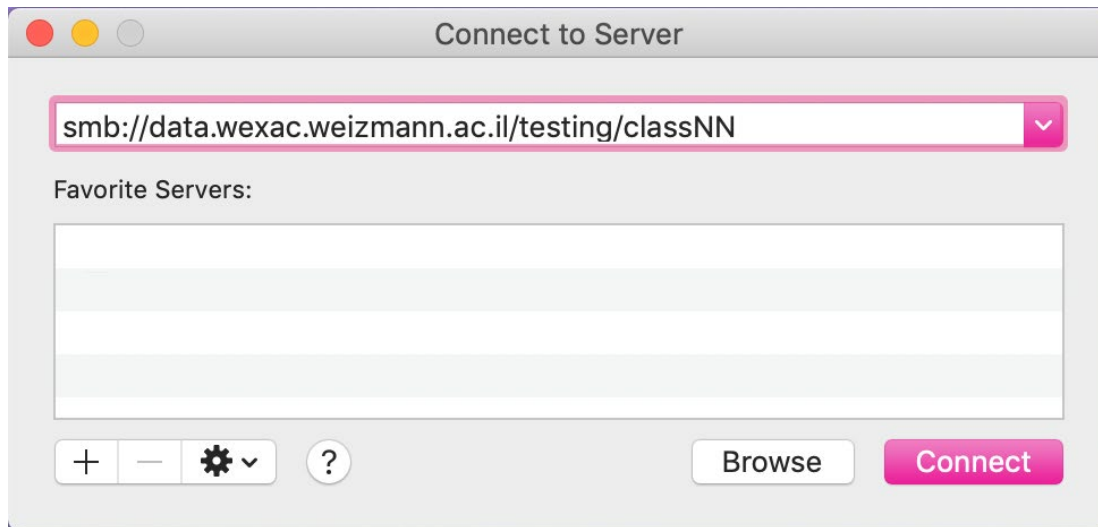
2. Enter the following path to your personal folder on WEXAC:  
(replace NN with your class username digit[s])  
smb://data.wexac.weizmann.ac.il/testing/classNN

Example below for class1



If you receive an error message, this might occur because you have already mounted a drive using credentials that are different (e.g. WIS username) from your **class** credentials. therefore, you will need to use the following path

smb://classNN:\*@data.wexac.weizmann.ac.il/testing/classNN



3. The following window will open, enter your password and press OK:

